

# Melbourne



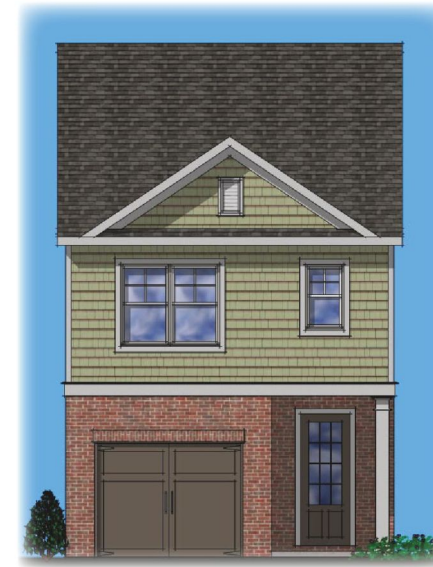
elevation A



elevation B



elevation C



elevation D

ROCKLYN HOMES

The Most Important Home We'll Build Is Yours



For illustrative purposes only. Actual construction may vary as circumstances dictate. Builder reserves the right to change or delete features at any time. Materials or items shown as "optional" may be selected at additional cost.

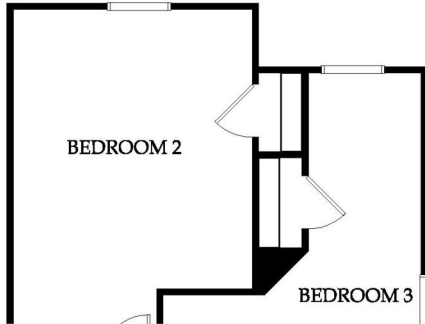


03/24/17

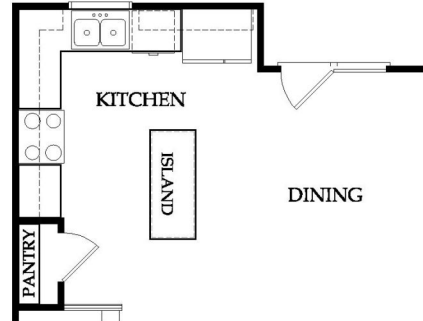
# MELBOURNE

3 Bedrooms, 2.5 Baths

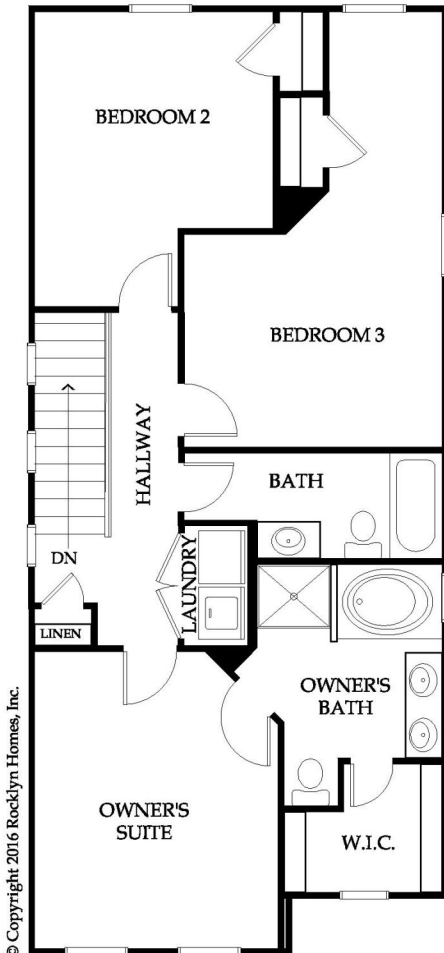
± 1,467 S.F.



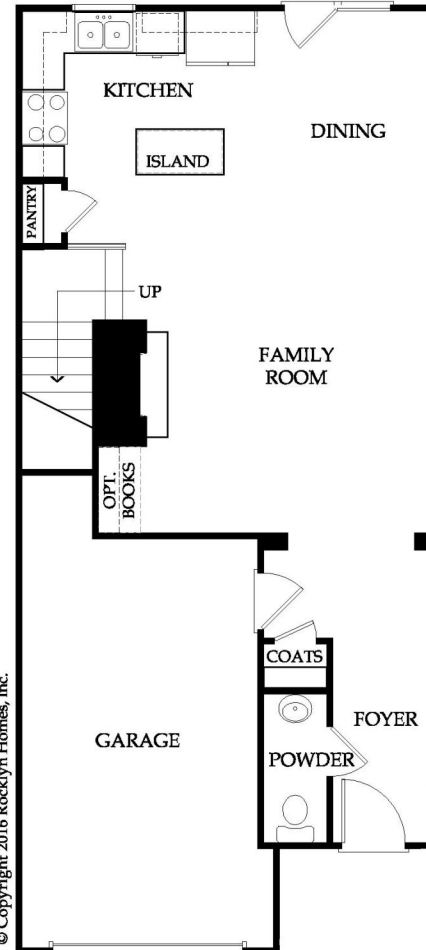
### Optional Second Floor



### Optional First Floor



### Second Floor



### First Floor

© Copyright 2016 Rocklyn Homes, Inc.

© Copyright 2016 Rocklyn Homes, Inc.

ROCKLYN HOMES

The Most Important Home We'll Build Is Yours



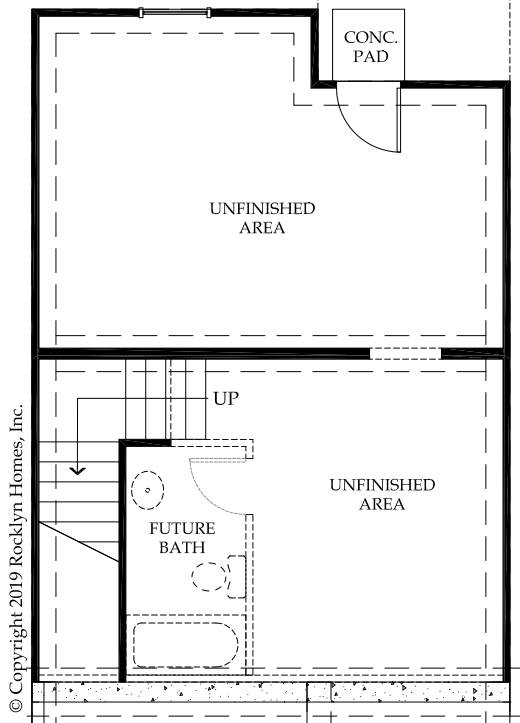
For illustrative purposes only. Actual construction may vary as circumstances dictate. Builder reserves the right to change or delete features at any time. Materials or items shown as "optional" may be selected at additional cost.



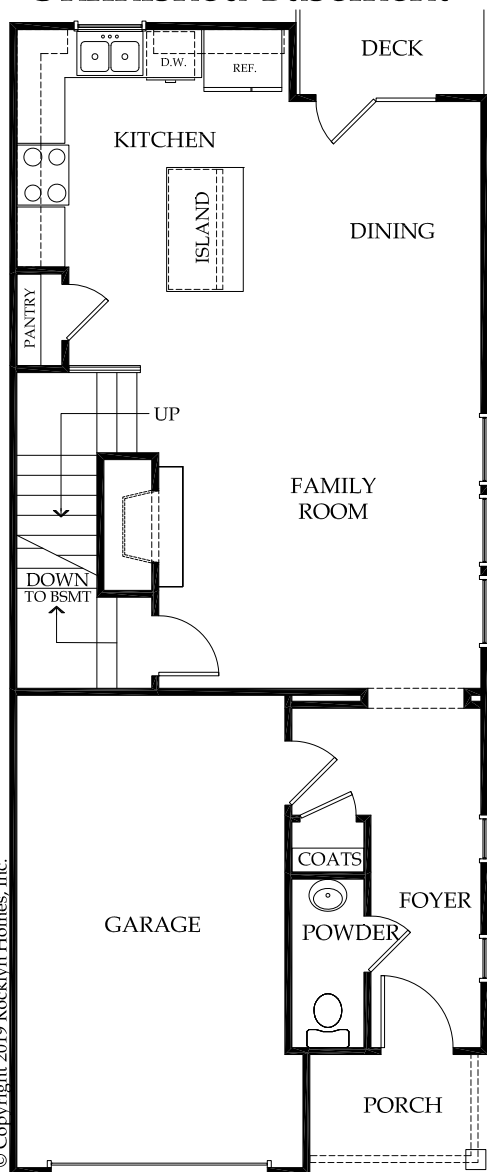
# MELBOURNE

3 Bedrooms, 2.5 Baths  
± 1,467 S.F.

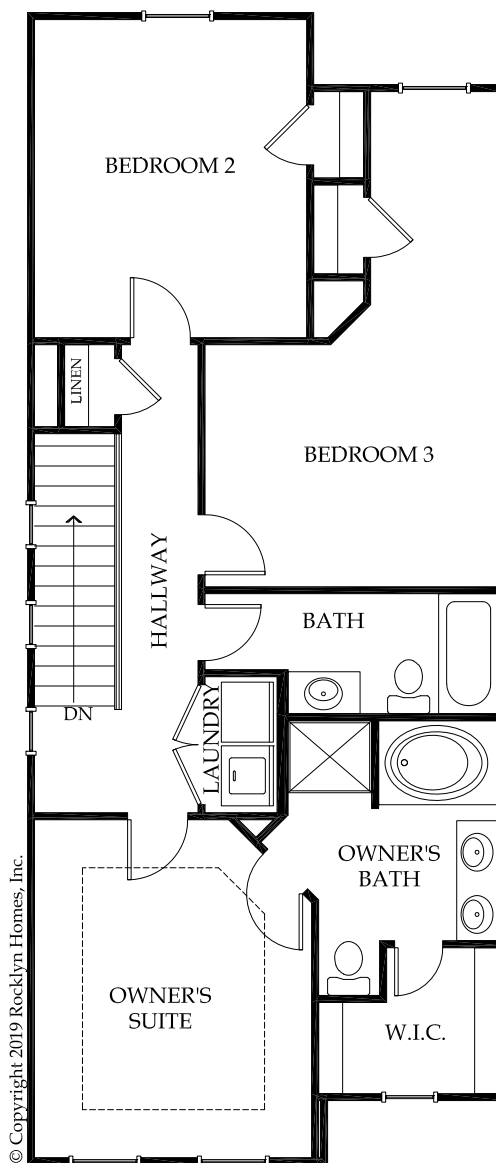
w/ Basement  
± 469 S.F.



### Unfinished Basement



### First Floor



### Second Floor



For illustrative purposes only. Actual construction may vary as circumstances dictate. Builder reserves the right to change or delete features at any time. Materials or items shown as "optional" may be selected at additional cost.

ROCKLYN HOMES

The Most Important Home We'll Build Is Yours